

## ROV/IMR - OFFSHORE SUPPORT VESSEL



### FUJIAN MAWEI DESIGN, 86.0M X 20.0M, 100T AHC CRANE, MOONPOOL, HELIDECK

Manager *N8 Ship Management Pte Ltd*  
 Class/Notation 1A Fire fighter(I) Offshore service vessel(Supply) BIS Clean Crane DPS(2) E0 HELDK OILREC Recyclable SPS  
 Vessel Name **NOR NAOMI**

#### PRINCIPAL PARTICULAR

Length Overall	86.00 m
Length BP	~81.30 m
Breadth Moulded	20.00 m
Depth to Main Deck	8.40 m
Draft (designed)	6.40 m
Deadweight	5000 tons
Deck Cargo Capacity	1500 tons
Cargo Deck Free Area	~950 m <sup>2</sup>
Deck Strength	7.50 t/ m <sup>2</sup>
Flag	Marshall Islands

#### RADIO & NAVIGATION EQUIPMENT

GMDSS	Area A3
Inmarsat	1 x Inmarsat C w/SSAS and LRIT
Radio Telephone	1 x MF/HF-DSC radio telephone 2 x VHF-DSC radio telephone 3 x VHF portable radios Also in Client office and ROV control room
Transceiver	1 x SSB transceiver 6 channel DSC
Radars	1 x 96nm X-band radar 20.1" display 1 x 96nm S-band 20.1" display
Compass	1 x Magnetic compass 1 x Gyrocompass
DGPS	2 x DGPS
Autopilot	1 x Autopilot
ECDIS	2 X ECDIS
BNWAS	1 x BNWAS
Echo Sounder	1 x Echo sounder, speed log
VDR	1 x VDR
Weather Fax	1 x Weather fax receiver
Auto Telephone	1 x Auto telephone system
Sound Powered Telephone	1 x Sound powered telephone system
PA/Talkback	1 x PA/Talkback system
Local Area Network	Local area network (LAN) connected
TV and Radio	1 x TV and Radio system
AIS	1 x AIS
DPS	K-Pos DPS-22, with following reference systems: 1 x HiPAP 501 1 x Radius 1 x Cyscan 2 x DGNSS DPS i4 + 2 x MGCs 2 x GAJT-710MS Anti-jamming antennas 3 x Gyro compass 3 x Wind sensors 3 x MRUs

#### TANK CAPACITY

Fresh Water	750 cu.m
Fuel Oil	800 cu.m
Water Ballast/Drill Water	2200 cu.m
Dry Bulk	420 cu.m
Mud/Brine/R.O	650 cu.m
Methanol/MEG R.O	340 cu.m
Slop	220 cu.m
Lub Oil	40 cu.m

#### PUMP CAPACITY

Fuel	2 x 150 cu.m @ 80m Hd
Fresh Water	2 x 150 cu.m @ 80m Hd
Dry Bulk	2 x 60t Hr, simultaneous discharge
Mud	2 x 75 cu.m @ 20m Hd
Methanol	2 x 50 cu.m @ 80m Hd
Brine	1 x 100 cu.m @ 80m Hd

#### MACHINERY / SPEED

Main Diesel Generators	4 x 1825 kw
Emergency Generator	1 x 350 kw
Thrusters	2 x 2200 kw, 360 deg Azimuths
Bow Thrusters	2 x 880 kw tunnel thrusters
Trial Speed at 4.50m Draft	14.50 knots
Type of Fuel	Marine Gas Oil

#### DECK EQUIPMENT

Anchors	2 x 3040 kgs HHP
Chain	50 mm U3 grade Tot. 522.2 m
Anchor/Mooring Windlass	2 x 12 tons @ 0-9 m/min C/W warping heads
Tugger Winches	2 x 10 tons @ 12 m/min
Capstans	2 x 10 tons @ 12 m/min
Cargo Rail Crane	2.5 tons @ 2.3-15 m

#### OTHER EQUIPMENT

Moonpool	4.4 m x 4.2 m w/cofferdam and hydraulic bottom door
Helideck	Sikorsky S92 - CAP 437 Marine Aluminium Aviation Communication System DIFFS (Deck Integrated FiFi System)

#### **LIFE SAVING EQUIPMENT & FIRE EXTINGUISHING SYSTEM**

Fast Rescue Boat	1 x Diesel Powered Fast Rescue boat 15 PAX w/Davit Launch
Life Rafts	10 x 25 persons
Life Jackets	92
Survival Suits	92
Fire Fighting	Fi Fi Class 1, 2 x 1600 cu.m @ 125m Hd
Emergency Fire Pump	Emergency Fire Pump 40 cu.m @ 60m Hd
Fixed Co2 System	Engine room, E/G room
Fixed Water Mist System	Engine room
Fireman Outfits	7
Fire Blankets	3 - for engine room, galley and paint store
AED (Automated External Defibrillator)	2 - on bridge and mess room

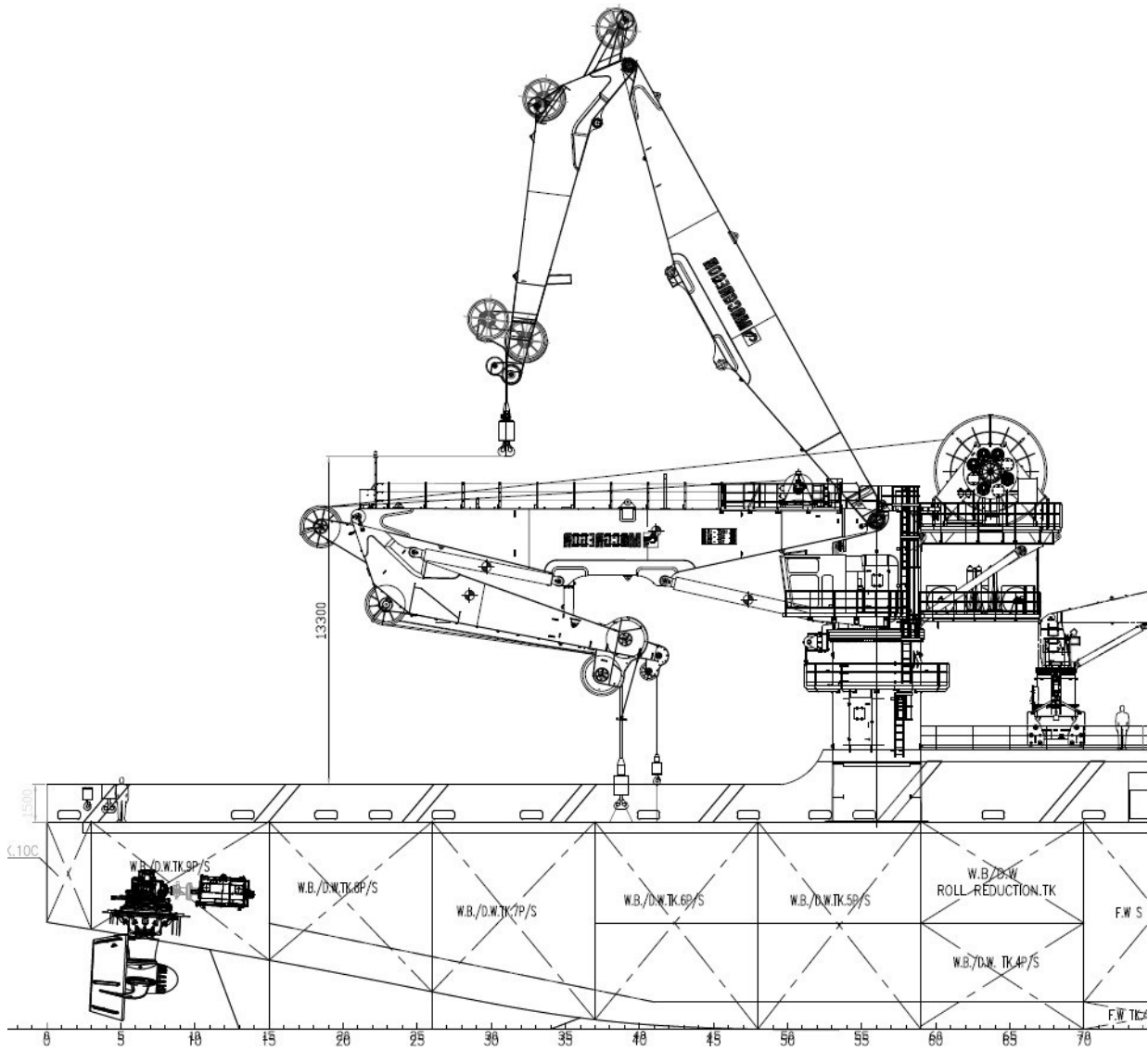
#### **ACCOMMODATION**

One Man Cabins	7 x 1
Two Men Cabins	6 x 2
Four Men Cabins	14 x 4
Total Beds	75
Hospital	1
Offices	3
Gym	2
Recreation Room	1
Smoking room	1

#### **CRANE**

Type	MacGregor Offshore Luffing Knuckle Jib Crane HMC 3568 LKO 250-32 (1000-15) AHC 3000m
Lifting Capacity	
Main Winch	100T @ 15 m 25T @ 32 m
Whip Winch	15T @ 33 m
Hook Travel	Main Winch: 3000 m Whip Winch: 500 m
Man Rated	5T





DP Bridge Control Console Aft:



Forward Bridge Console:



Offshore AHC 100T Crane:



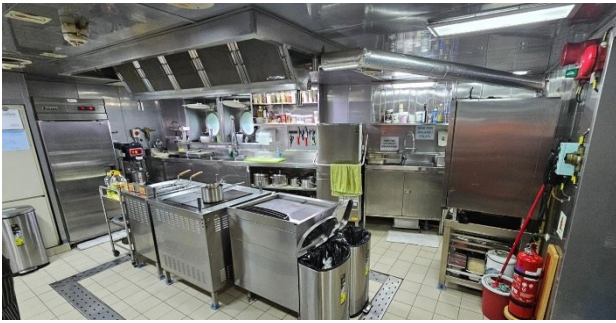
Helideck:



Engine room:



Galley:



Messroom:



Communication:



Recreation room:



Smoking room:



Gymnasiums:

