

## 84M CSS MAINTENANCE AND SUPPORT UNIT



### CSS MAINTENANCE AND SUPPORT UNIT, 84 M x 32 M, ABS, +DPS-3, UWILD, HELIDK, +AMS(E), 501 PAX ACC.

Manager	NORTRANS ACCOMMODATION PTE LTD
Class/Notation	ABS, +A1, COLUMN-STABILIZED UNIT, ACCOMMODATION SERVICE, +DPS-3, UWILD, HELIDK, +AMS(E)
Vessel Name	TEMIS

#### PRINCIPAL PARTICULARS

Length Overall	84.0 m
Beam Moulded	32.0 m
Depth to Main Deck	22.2 m
Operating Draft	8.9 m
Deep Operating Draft	12.5 m
Speed	10.5 knots
Type of Fuel	Marine Diesel Oil
Place of Build	China

#### MACHINERY/PROPULSION

Main Diesel Generators	6 x 2800 kw RR Bergen
Emergency Generators	1 x 910 kw
Thrusters	4 x 3000 kw 360 deg Azimuths Rolls Royce US 305FP/4100

#### DECK/AUXILIARY EQUIPMENTS & OTHERS

Anchors	3 x 5850 kgs HHP
Chain	68 mm U3 grade
Anchor/Mooring Windlass	2 x 20 tonnes @ 0-23 m min c/w Warping Heads
Stern Mooring Winches	2 x 20 tonnes @ 0-23 m min
Deck Crane	60 tonnes @ 25 m 20 tonnes @ 45 m 10 tonnes @ 50 m
	3 tonnes cert. man riding
Aux. Crane (Offshore Kunckle jib)	10 tonnes @ 20 m 12 tonnes @ 18 m
Helideck	To suit Sikorsky S92 or S61-N or Super Complies with CAP 437
Gangway	Hydraulic Positioning, Length 36.5 m Stroke +/- 6 m

#### CAPACITIES

Deadweight @ 8.9 m	3300 tonnes
Deck Cargo Capacity	500 tonnes
Cargo Deck Free Area	640.0 m <sup>2</sup>
Deck Strength	5 tonnes/m <sup>2</sup>
Under Deck Hold	136.0 m <sup>2</sup>
	93.0 m <sup>2</sup> with 5.1 m height balance 2.4 m high
Fuel Oil	1660.0 m <sup>3</sup>
Fresh Water	1479.6 m <sup>3</sup>
Water Ballast/Drill Water	7056.2 m <sup>3</sup>
Sewage Holding Tank	107.8 m <sup>3</sup>
Lub Oil	44.8 m <sup>3</sup>
Freezer & Chiller	For a period of 30 Days

#### ACCOMMODATION

Passengers	1 x 1 man, 112 x 2 men, 69 x 3 men
Crews	7 x 1 man, 31 x 2 men
Total	501 men
Conference Room	2 x 14 seats, 1 x 6 seats and 1 x 8 seats
Offices	8 for Client
Hospital	4 beds
Gym	1
Fully Air-Conditioned	HVAC Integrated with F&G System
Fixed Gas Detection	H2S and Combustible Gas

**RADIO & NAVIGATION EQUIPMENT**

GMDSS: Area 1+2+3  
1 x Inmarsat C with SSAS and LRIT  
2 x MF/HF-DSC Radio Telephone  
2 x VHF-DSC Radio Telephone  
2 x VHF Radio Telephone  
1 x SSC Transceiver 6 Channel DSC  
1 x 96nm X-Band Radar 23" Display  
1 x 96nm S Band 23" Display  
9 x VHF Portable Radios  
2 x AV VHF Portable Radios  
3 x UHF Portable Radios  
1 x Magnetic Compass  
1 x Gyrocompass  
1 x DGPS  
1 x Autopilot  
1 x BNWAS  
1 x Echo Sounder, Speed Log  
1 x VDR  
1 x Weather Fax Receiver  
1 x Auto Telephone System  
1 x Sound Powered Telephone System  
2 x PA/GA System  
2 x Local Area network (LAN) connected  
1 x TV and Radio System  
1 x AIS  
K-Pos DPS-3, with following reference systems:  
3 x Gyro Compass,  
3 x Wind Sensors – 3 x MRUs  
2 x Radius, 2 x DGPS, 2 x ILLA, 1 x Cyscan, 1 x HIPAP 350

**FIRE EXTINGUISHING SYSTEM**

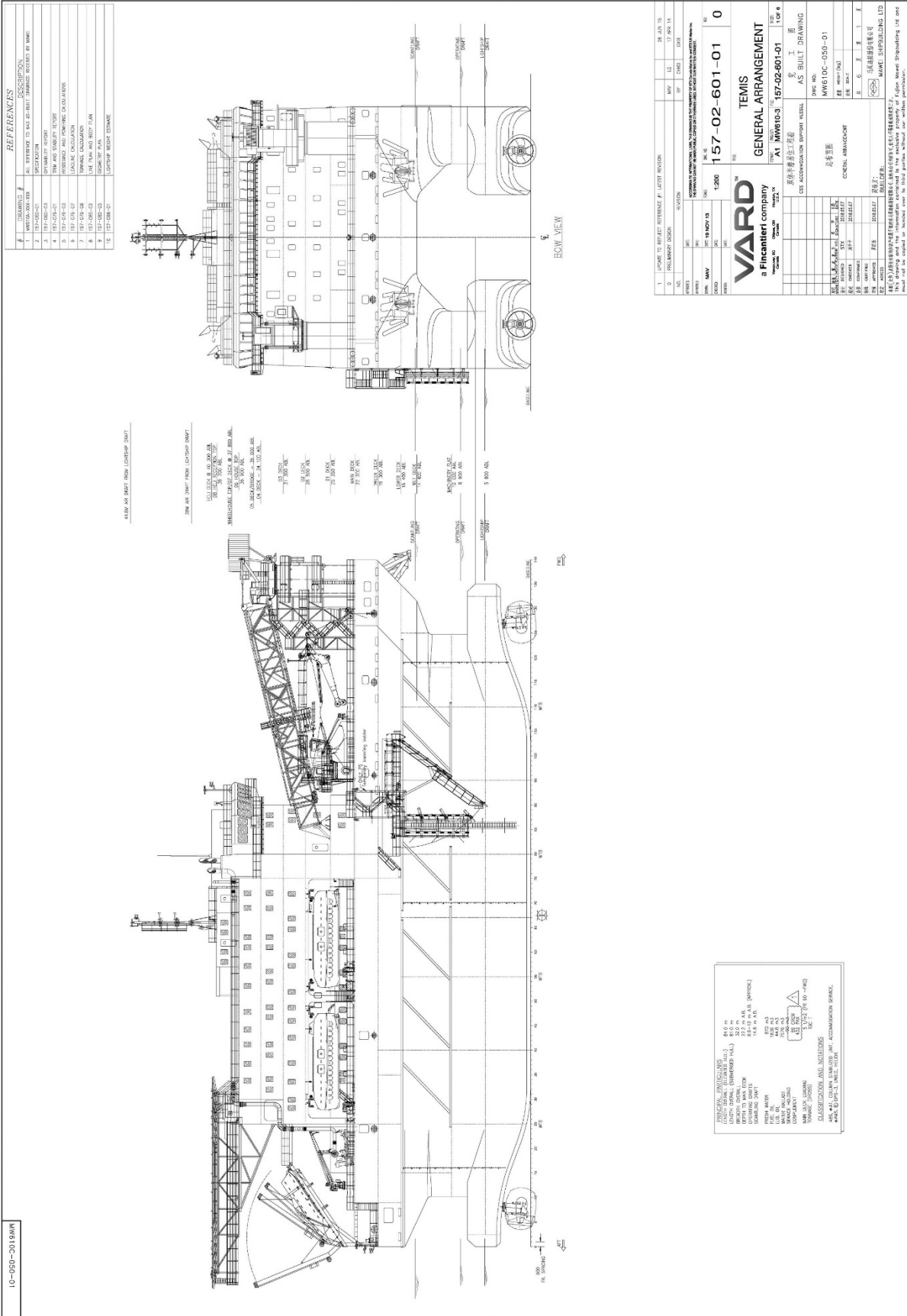
Fire Pumps 2 x 150 m<sup>3</sup>/hr @ 12.5 bar  
Fire main piped throughout the vessel supplied to Helideck with Foam System  
Fire Hydrants and Fire Extinguishers as Class requirements  
1 x Water Sprinkler System throughout Accommodation  
CO2 Fire Extinguishing System in Pt and Stb Engine Rooms  
Emergency Generator Room and Paint Locker  
4 x Fireman Outfits  
2 x Fire Blankets for Engine Room and Galley

**LSA EQUIPMENT**

2 x 150 men Life Capsules Pt & Stb (4 in total)  
3 x 67 men Life Free Fall Capsules on the Stern  
2 x Diesel Powered Rescue Boat for 6 persons  
12 x 25 men + 1 x 6 men Lift Rafts SOLAS approved each side  
10 x Lifebuoys SOLAS approved  
518 Lifejackets as per SOLAS requirement  
2 x EPIRB SOLAS approved  
1 x Line Throwing Apparatus  
12 x Parachute Distress Signals  
4 x Embarkation Ladders 2 on each side  
1 x First Aid Kit  
1 x Daylight Signaling Light  
1 x Air Horn  
1 x Diesel Powered Fast rescue Boat for 12 persons

**AUXILIARY EQUIPMENT**

1 x Sewage Treatment Plant suitable for 500 men  
Water Makers 3 x 75 tonnes/day  
3 x 45 m<sup>3</sup>/hr + 1 x 30 m<sup>3</sup>/hr Ships Air Compressors  
2 x Working Air Compressor 2.08 m<sup>3</sup>/min  
2 x Oily Bilge Water Separator



GENERAL INFORMATION  
 DRAWING NO. 10-050-01  
 PROJECT NO. 115-001-001  
 DRAWING TITLE 115-001-001 (APPROX.)  
 DRAWING DATE 115-001-001  
 DRAWING SCALE 1:1000  
 DRAWING SIZE A4  
 DRAWING TYPE AS BUILT  
 DRAWING CLASSIFICATION 115-001-001  
 DRAWING STATUS 115-001-001  
 DRAWING APPROVED BY 115-001-001  
 DRAWING DATE 115-001-001

1	10-050-01	115-001-001	115-001-001	115-001-001	115-001-001	115-001-001	115-001-001
2	10-050-01	115-001-001	115-001-001	115-001-001	115-001-001	115-001-001	115-001-001
3	10-050-01	115-001-001	115-001-001	115-001-001	115-001-001	115-001-001	115-001-001
4	10-050-01	115-001-001	115-001-001	115-001-001	115-001-001	115-001-001	115-001-001
5	10-050-01	115-001-001	115-001-001	115-001-001	115-001-001	115-001-001	115-001-001
6	10-050-01	115-001-001	115-001-001	115-001-001	115-001-001	115-001-001	115-001-001
7	10-050-01	115-001-001	115-001-001	115-001-001	115-001-001	115-001-001	115-001-001
8	10-050-01	115-001-001	115-001-001	115-001-001	115-001-001	115-001-001	115-001-001
9	10-050-01	115-001-001	115-001-001	115-001-001	115-001-001	115-001-001	115-001-001
10	10-050-01	115-001-001	115-001-001	115-001-001	115-001-001	115-001-001	115-001-001

**115-001-001**

**GENERAL ARRANGEMENT**

**115-001-001**

**115-001-001**

**115-001-001**